

# AMANUS MOUNTAIN

## SE - Turkey (Dörtyol Region)

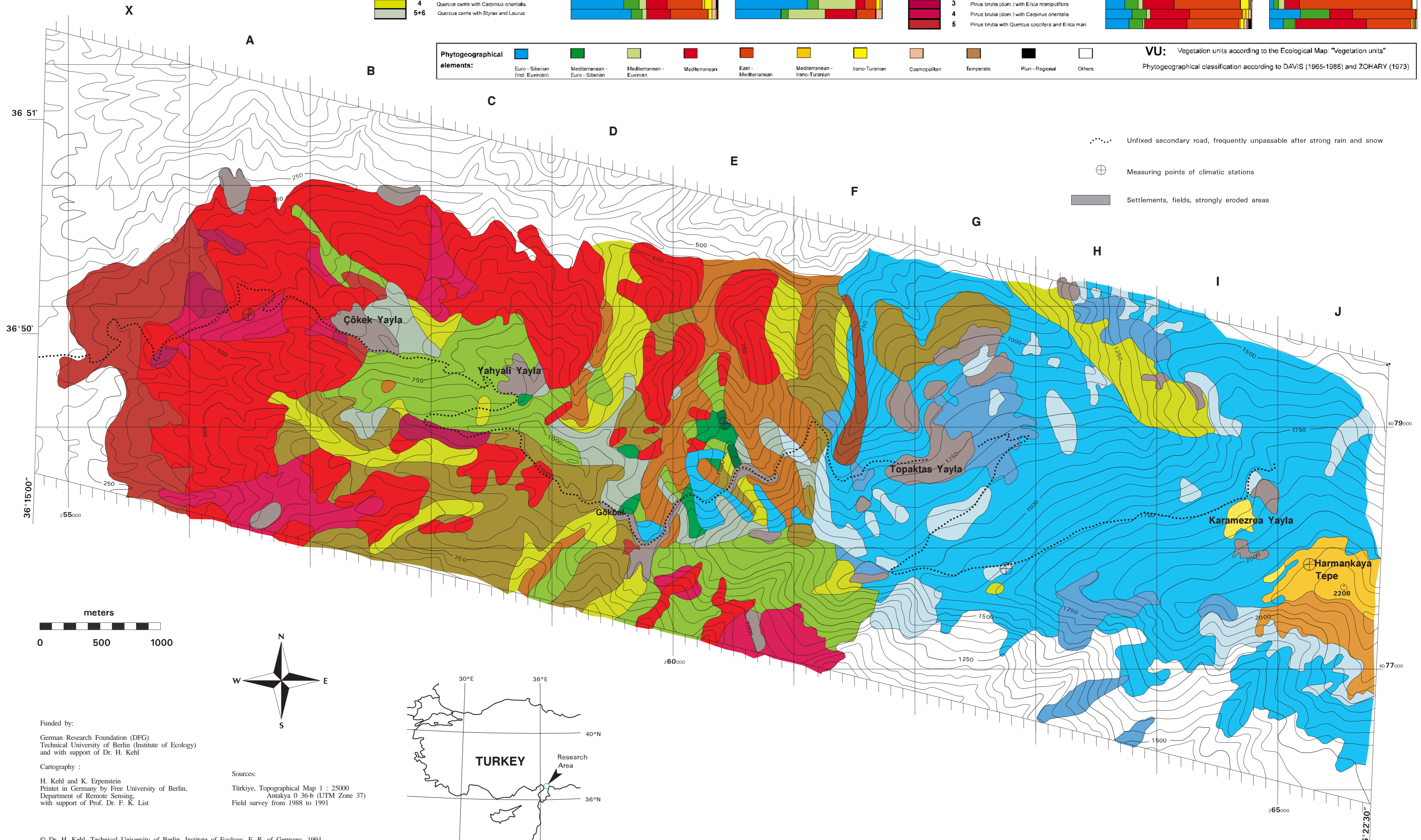
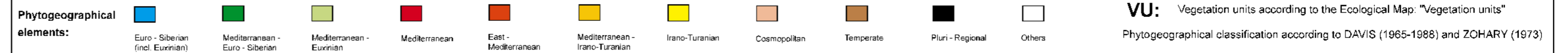
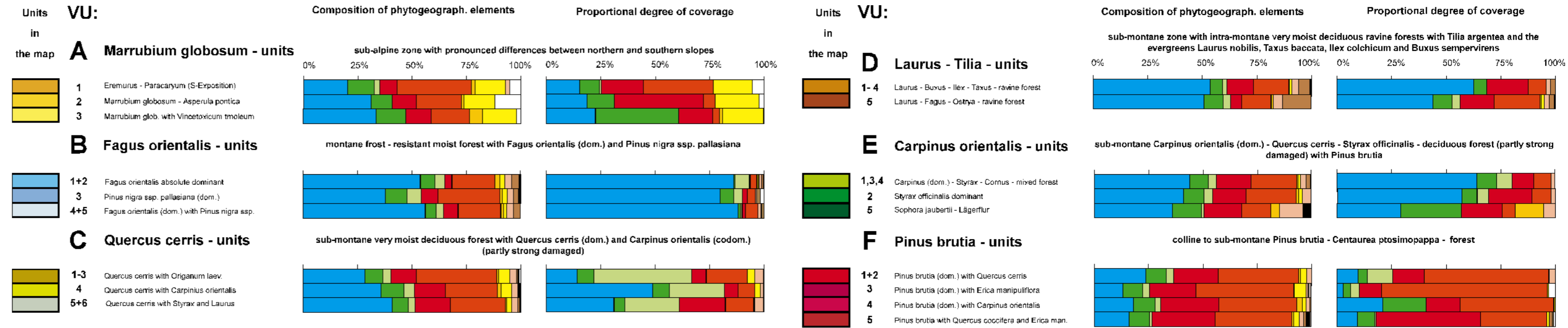
# Ecological Map

prepared by the research project



Author: H. Kehl

### Geobotanical Classification



- Unfixed secondary road, frequently unpassable after strong rain and snow
- Measuring points of climatic stations
- Settlements, fields, strongly eroded areas

Funded by:  
 German Research Foundation (DFG)  
 Technical University of Berlin (Institute of Ecology)  
 and with support of Dr. H. Kehl

Cartography:  
 H. Kehl and K. Erpenstein  
 Printed in Germany by Free University of Berlin,  
 Department of Remote Sensing,  
 with support of Prof. Dr. F. K. List

Sources:  
 Türkiye, Topographical Map 1 : 25000  
 Antalya 0 36-b (UTM Zone 37)  
 Field survey from 1988 to 1991